

EDUCTORS FOR PNEUMATIC CONVEYING

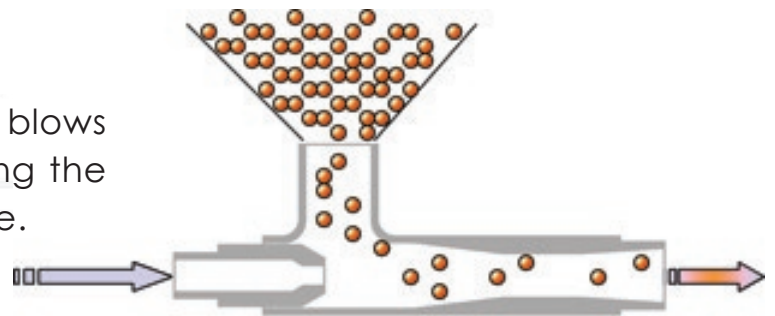
CON-V-AIR Experience:

CON-V-AIR eductors are a low cost solution to trouble free conveying of bulk solids. Our eductors have been put through a rigorous testing process, in house, via our laboratory and expert engineers. CON-V-AIR boasts a testing facility to ensure the quality, efficiency and capability of each eductor we design and sell. Many hours of research go into providing our clients with the best eductors on the market today. Quotes are submitted within 24-48 hrs after the initial inquiry and we provide a 90 day money back guarantee on all our products. Finally, we can provide our clients with exact motive fluid requirements in order to source their equipment. Give

CON-V-AIR a call, your satisfaction is our priority!

CON-V-AIR Experience:

This process takes in the material and gently blows it to it's final destination. This makes feeding the line much easier, without particle breakage.



Dilute Phase

This process mixes both homogenous solids and motive fluids. It has a transfer speed of 4000 feet/min.



Self Regulating

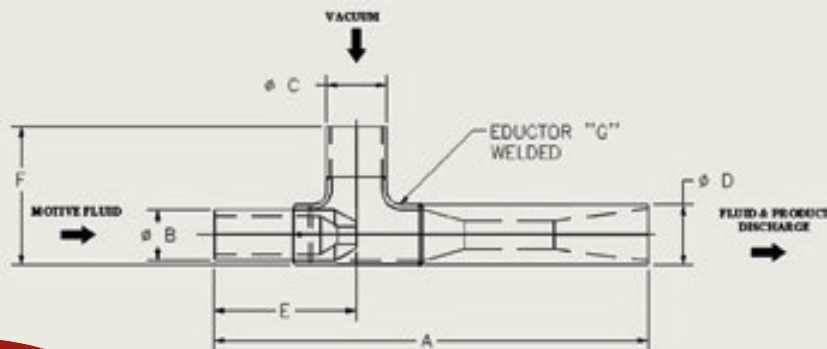
This feature ensures that the eductor takes in only the amount of product which it is able to transfer, thus preventing any blockage.



PNEUMATIC CONVEYING CAPACITY & DIMENSIONS:

CONVEYING EDUCTOR DIMENSIONS

| EDUCTOR SIZE "G" | A (INCHES) | B (INCHES) | C (INCHES) | D (INCHES) | E (INCHES) | F (INCHES) |
|------------------|------------|------------|------------|------------|------------|------------|
| 1" 1/2 | 12 | 1 | 1.9 | 1.9 | 6.25 | 5.2 |
| 2" | 17 | 2 | 2.375 | 2.375 | 6.5 | 6 |
| 2" 1/2 | 19 | 2.5 | 2.875 | 2.875 | 7 | 6.5 |
| 3" | 24 | 3 | 3.5 | 3.5 | 7.5 | 7.125 |
| 4" | 28 | 4 | 4.5 | 4.5 | 9 | 8.5 |
| 6" | 36 | 6 | 6.625 | 6.625 | 10 | 12 |



EQUIVALENT LENGTH IN FT.
 = Horizontal (ft) + vertical (ft)
 + #90° elbow X 20

CONVEYING EDUCTOR CAPACITIES

MAXIMUM CAPACITIES FOR EQUIVALENT LENGTHS

| EDUCTOR SIZE "G" | 50 FEET (LBS/HR) | 100 FEET (LBS/HR) | 150 FEET (LBS/HR) |
|------------------|------------------|-------------------|-------------------|
| 1" 1/2 | 785 | 195 | 0 |
| 2" | 1850 | 730 | 230 |
| 2" 1/2 | 3100 | 1500 | 700 |
| 3" | 6000 | 3200 | 1850 |
| 4" | 12600 | 7800 | 5000 |
| 6" | 35000 | 25000 | 19000 |

QUALITY OF OUR EDUCATORS



Machined From Bar:

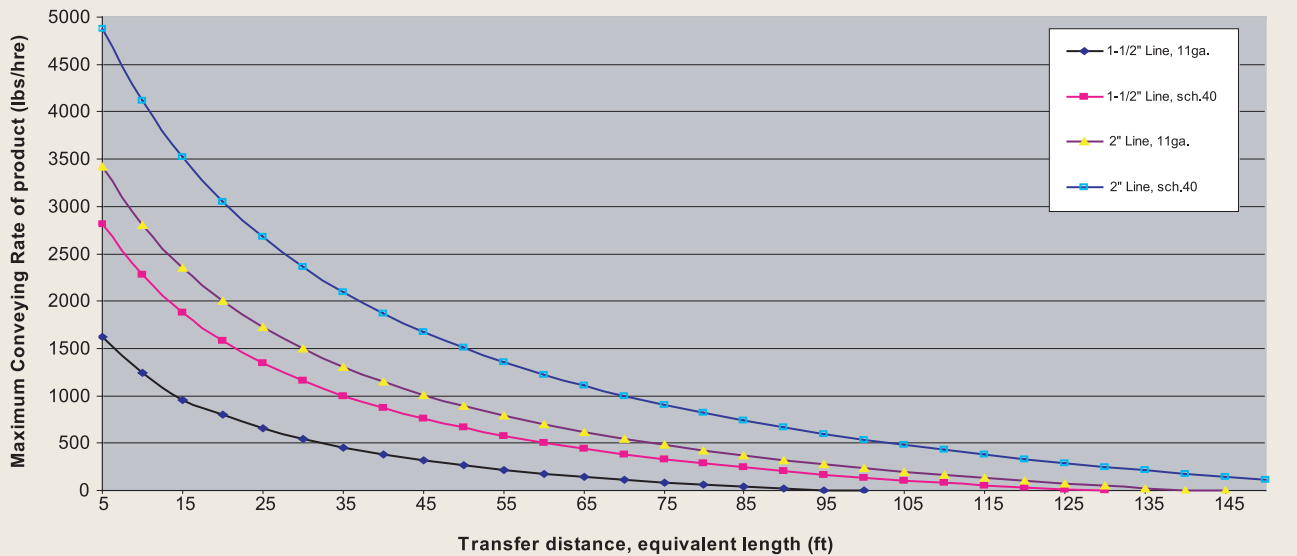
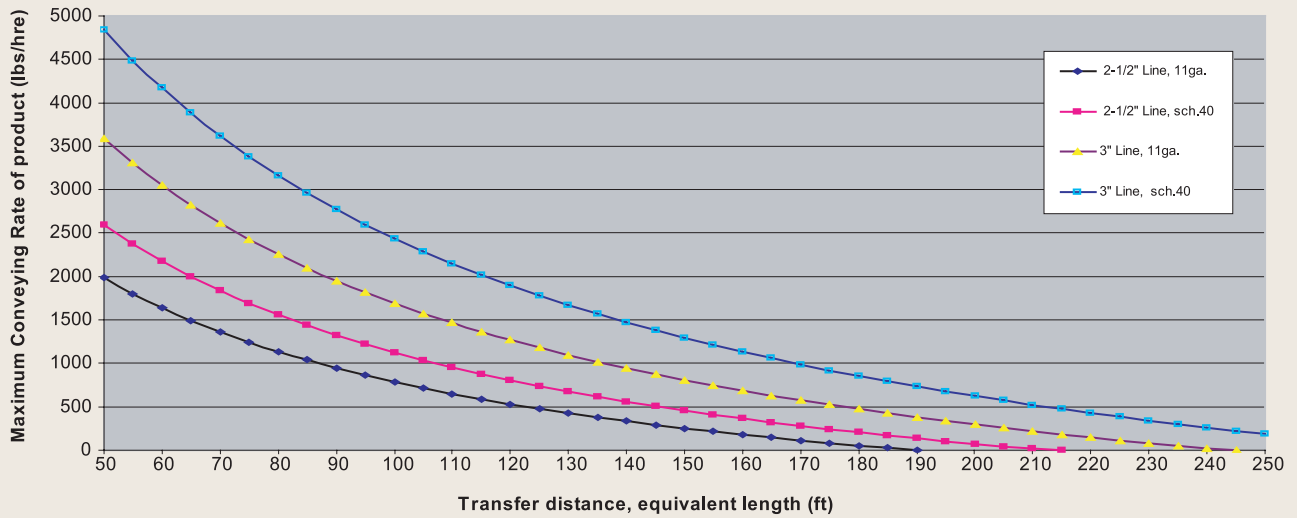
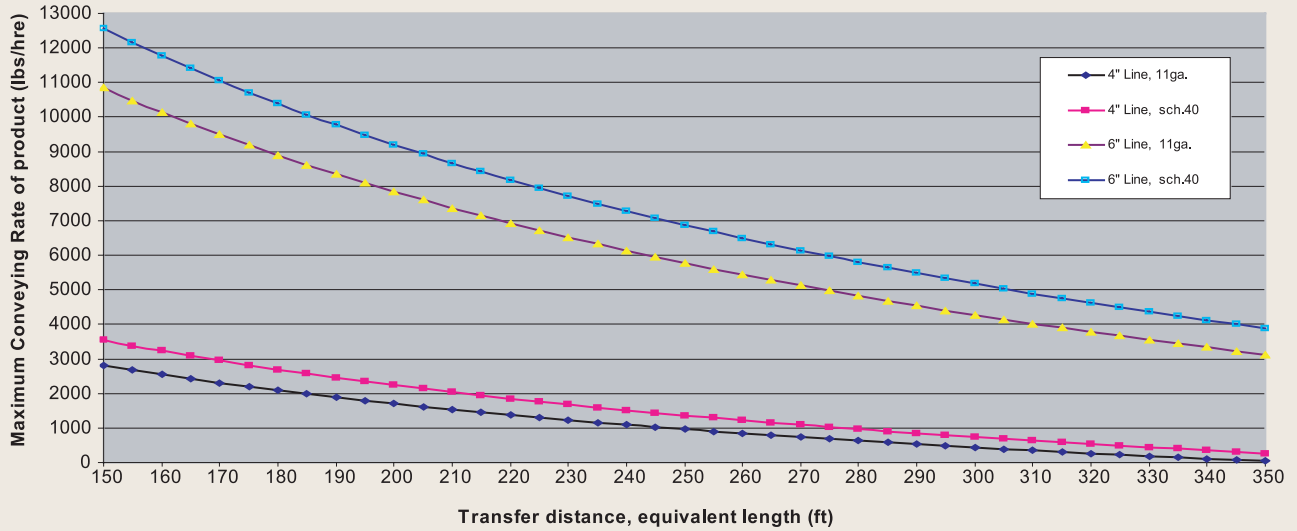
Compared to other educators on the market, CON-V-AIR educators are machined from whole bars. This allows a high durability when transferring abrasive materials, due to the high thickness of the venturi.

How Does It Work?

Eductors use the vacuum created by the venturi to introduce the bulk solids into the conveying line. Technological advances realized by CON-V-AIR will allow you to use an affordable air source provided either by a regenerative blower, a positive displacement blower, or a compressor, while conveying without the need for a rotary airlock.

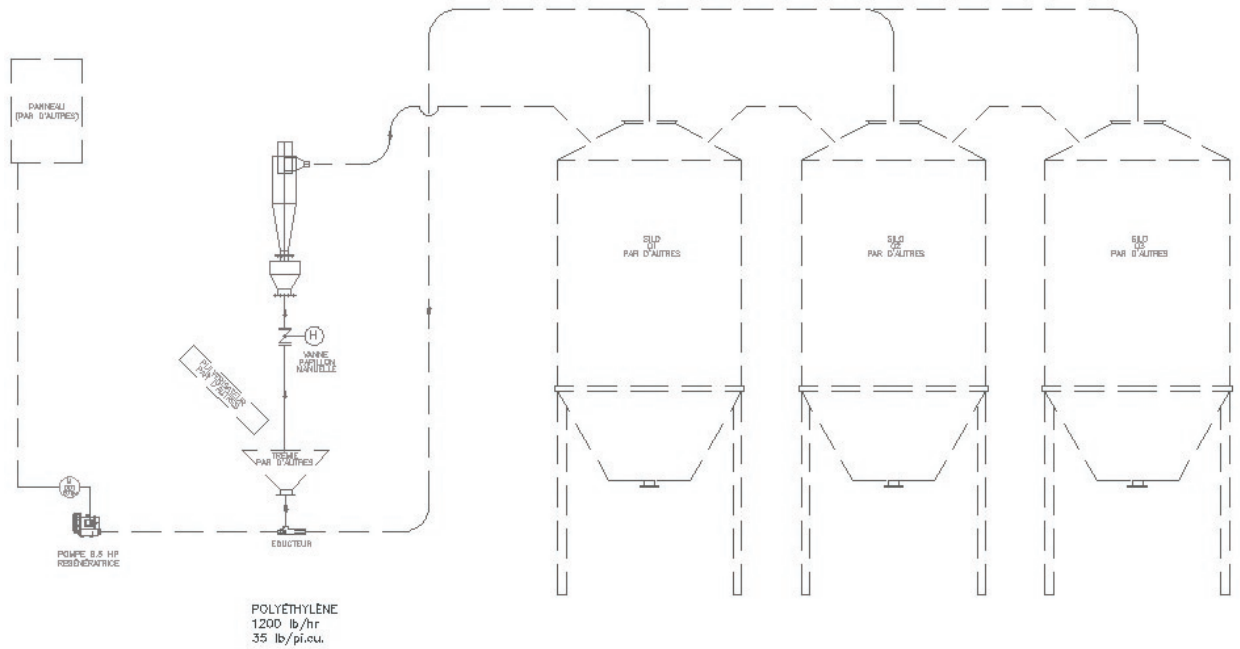
EDUCTOR CONVEYING RATES

Transfer capacities for a CON-V-AIR eductor at 4psig (air)

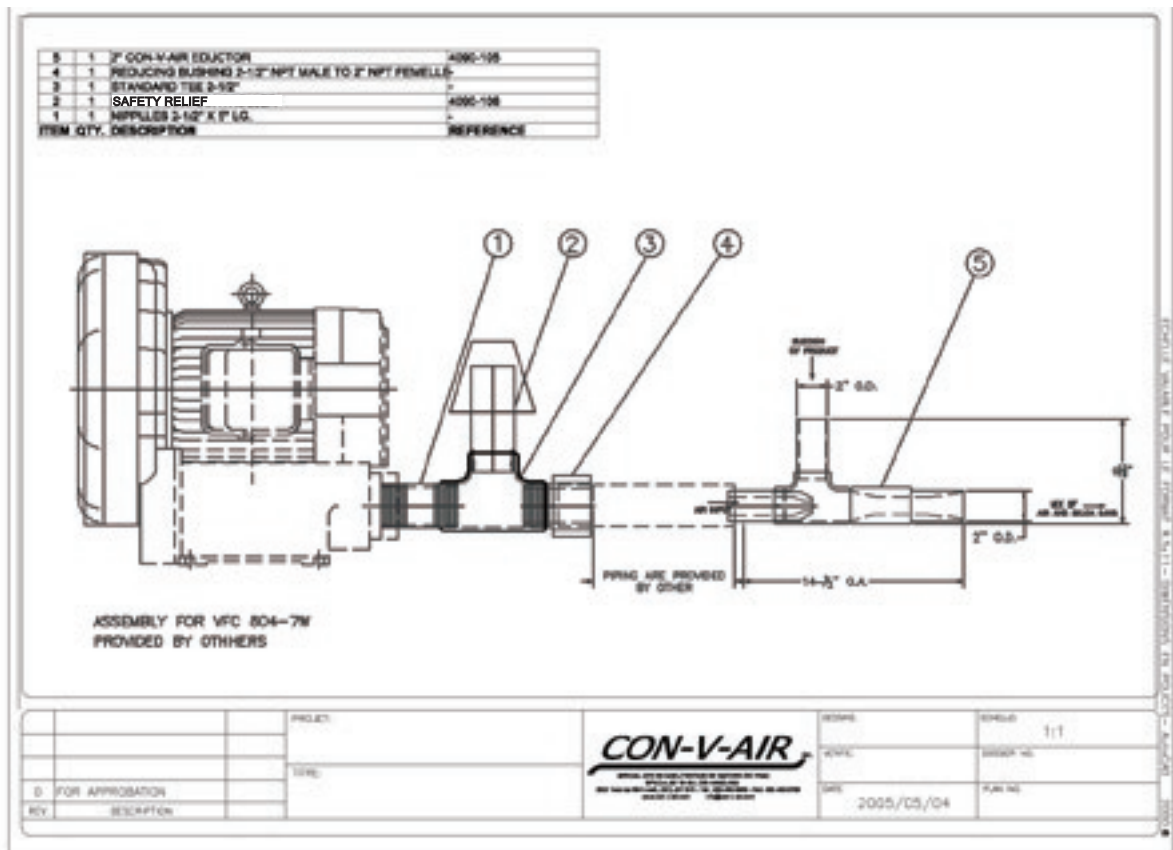


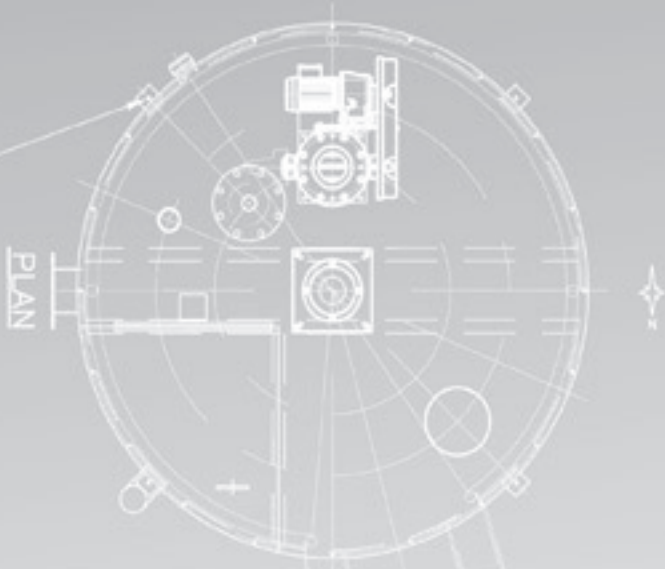
STANDARD APPLICATIONS:

The following schematics are examples of systems built for two of our clients:



TRANSFER OF P.E.T.





TYPICAL PRODUCTS HANDLED:

PLASTICS
LIME
SAND
FLY ASH
WOOD FLOUR
FIBERGLASS STRANDS

CON-V-AIR Inc.

3500 1ère Rue
Saint-Hubert, QC, Canada
J3Y 8Y5

Tel: 1.450.462.5959

Fax: 1.450.462.0756



CON-V-AIR INC.

www.con-v-air.com